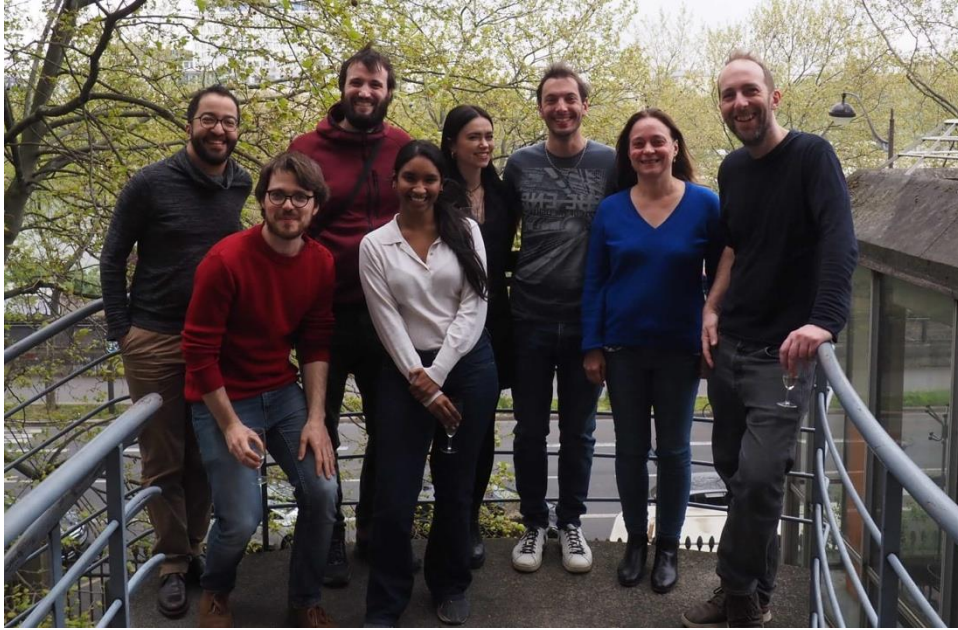
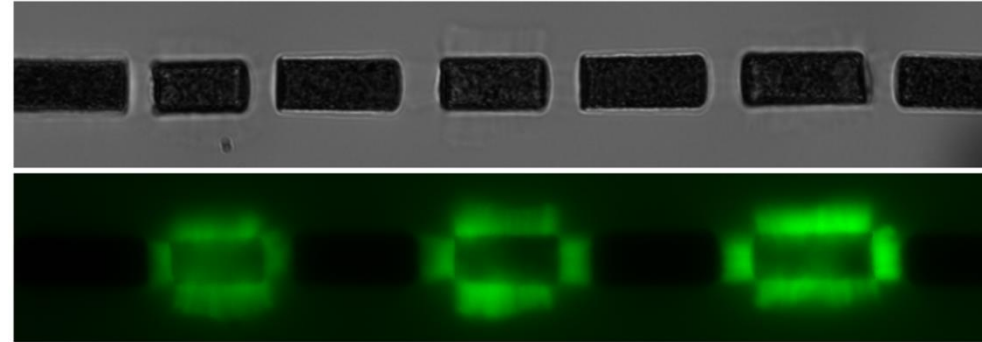


Julien Heuvingh & Olivia du Roure @ PMMH

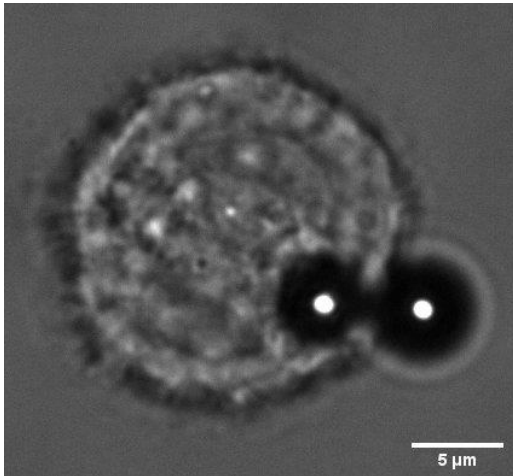


Axis 1: Controlling and programming biological living matter.

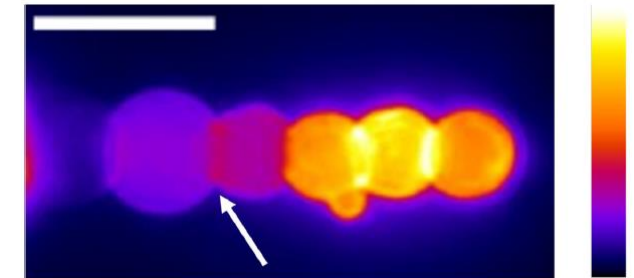
Axis 2: Emergence of spatial and temporal organization in living matter.



Magnetic beads and cylinders to deform (nN) and measure (nm) actin networks or fuse membranes.



Cell cortex dynamical and mechanical properties.
(with Matthieu Piel's Team)



Possible collaborations: relevant biological phenomena, other organelles (nucleus, mitochondria), cell mechanics.