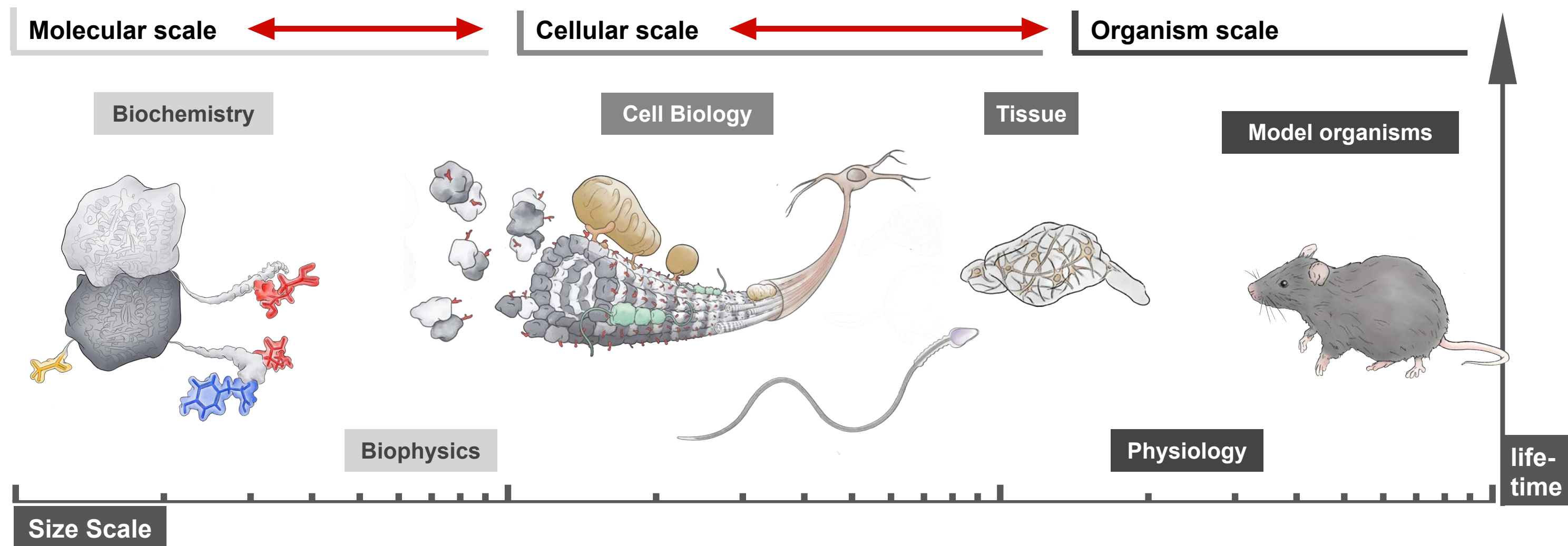
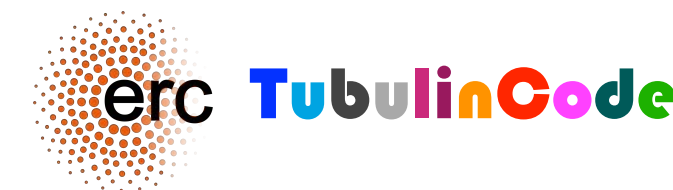


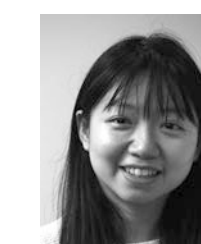
Our approach: from molecules to organisms



Our team



Shreyangi
Chakraborty



Chieh-Yu
Chang



Frédéric
Coquelle



Eva
Desvigne-Hansch



Véronique
Henriot



Carsten
Janke



Drishtant
Kawale



Sinda
Khanfir



Laura
Lebrun



Danilo
Lopes



Maria M
Magiera



Fabienne
Pierre



Shietela
Sewnarain Sukul



Valerie
Siahaan

Opportunities for collaborations:

- Modelling of the regulatory mechanism
- Reprogramming enzymes
- *in-vivo* detection tools
- evolutionary perspective
- implication in disease mechanisms

?1 - molecules

What is the impact of tubulin post-translational modifications on microtubule structure, dynamics and interactions with associated proteins?

?2 - cells

How do tubulin modifications control microtubule organisation and functions in cells, and how does this affect physiological functions of those cells?

?3 - organisms

How do tubulin modifications control life-long function at the organism level? How do they adapt organisms to environmental challenges?